

Hillsburgh

2,295 SQ FT | ELEVATION A

33' COLLECTION	 4
	 2.5

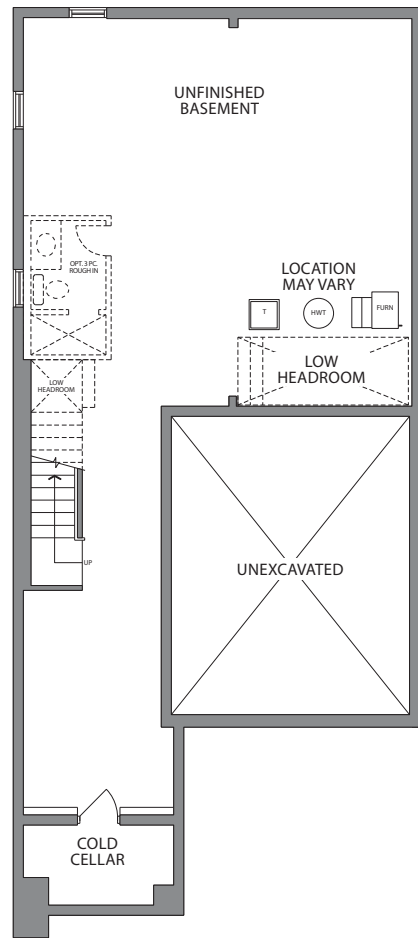


2,331 SQ FT | ELEVATION B

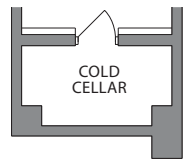


2,330 SQ FT | ELEVATION C

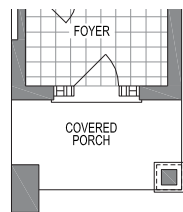




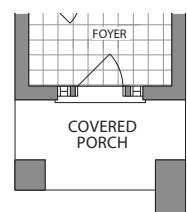
LOWER LEVEL
ELEVATION A & B



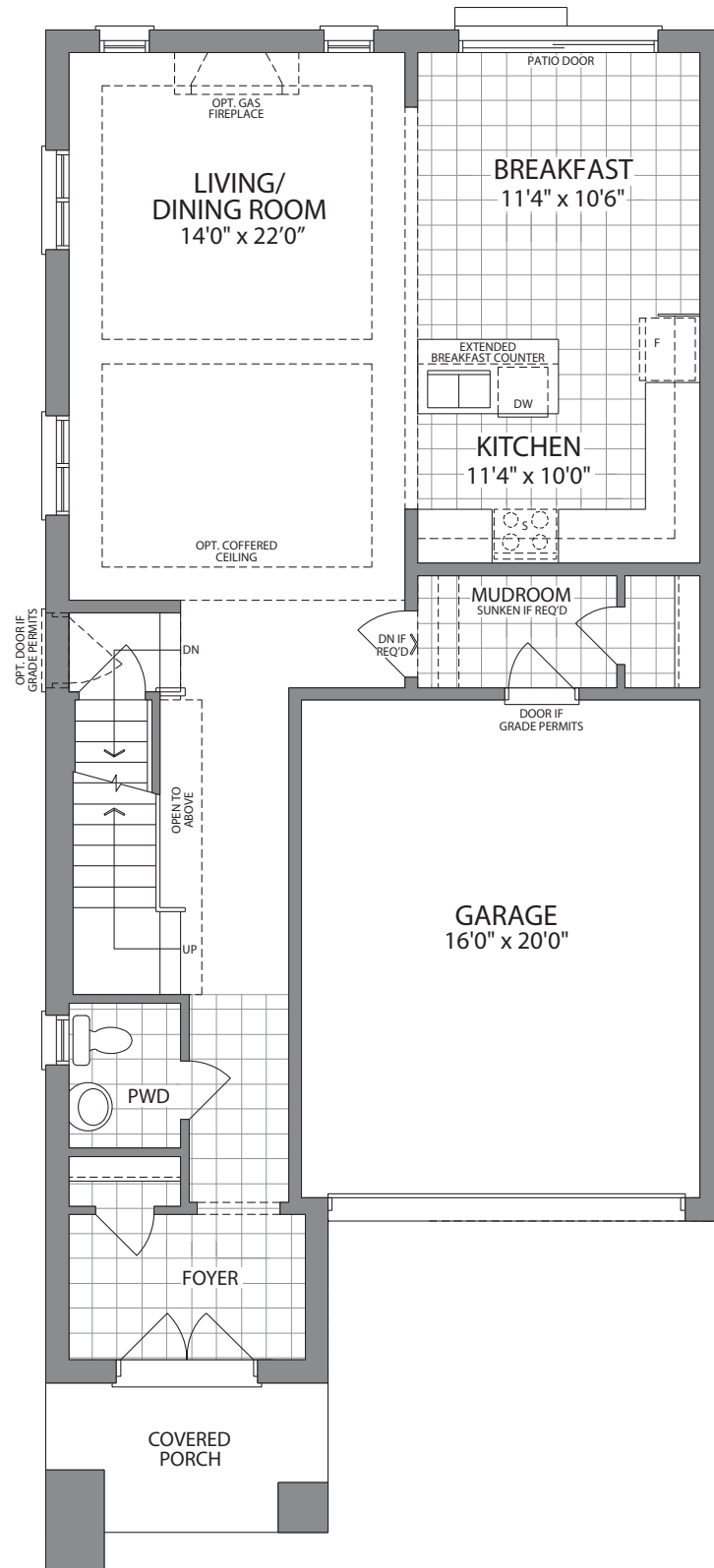
PARTIAL LOWER LEVEL
ELEVATION C



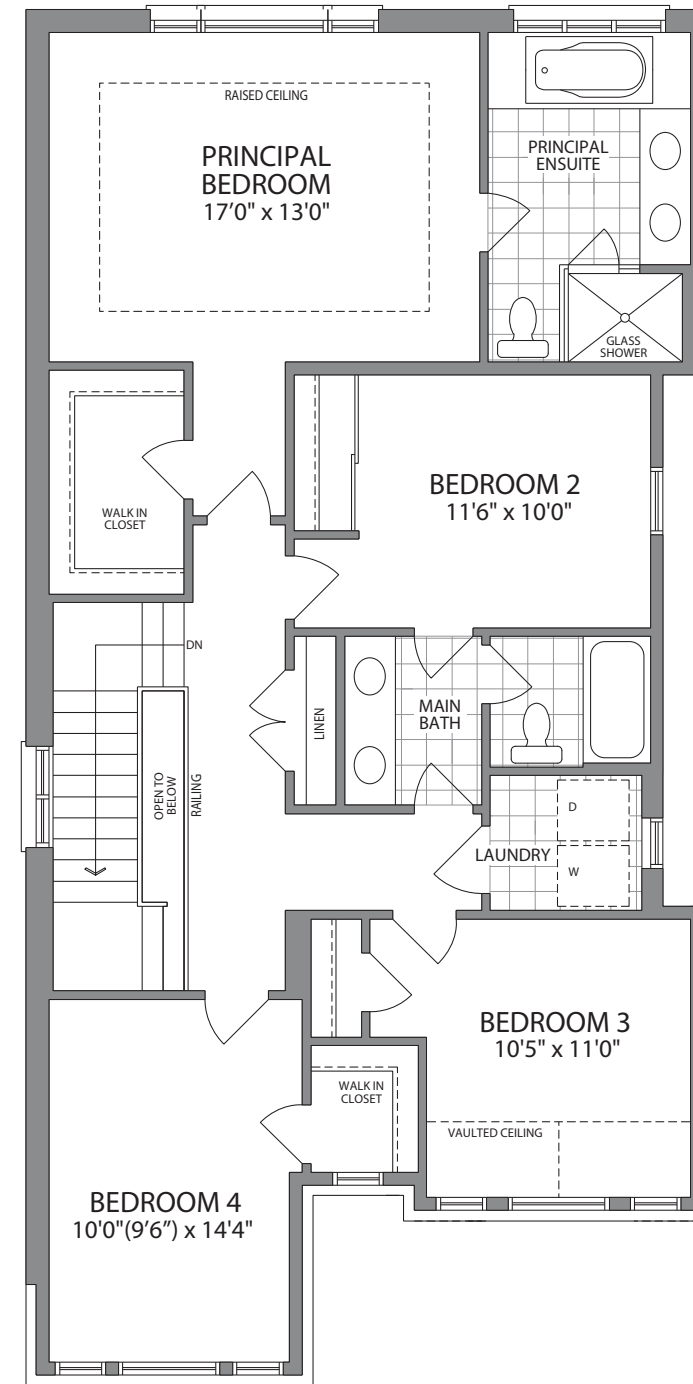
PARTIAL
MAIN LEVEL
ELEVATION A



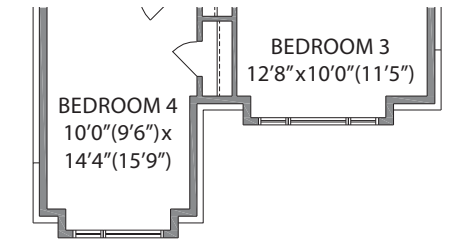
PARTIAL
MAIN LEVEL
ELEVATION C



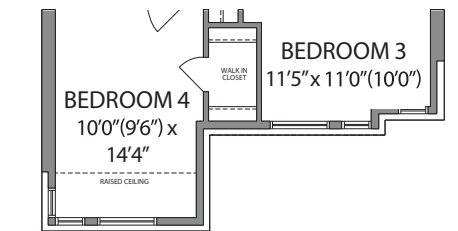
MAIN LEVEL
ELEVATION B



UPPER LEVEL
ELEVATION B



PARTIAL UPPER LEVEL
ELEVATION A



PARTIAL UPPER LEVEL
ELEVATION C

33.5' COLLECTION

4

2.5

Hillsburgh

ELEV. A 2,295 SQ FT | ELEV. B 2,331 SQ FT | ELEV. C 2,330 SQ FT

Dimensions, specifications, layouts and materials are approximate only, may vary, and are subject to change as provided in the Agreement of Purchase & Sale. The floor plans and elevations shown are pre-construction plans and may be revised or improved as necessitated by architectural control and the construction process. All representative square footage include applicable finished lower level and open to below and above areas. Actual usable floor space may vary from the stated floor area. Square footage varies according to architectural style. Plans may be reversed. Number of steps may vary and are subject to final grading and municipal approval. Illustrations are artist's concept. Elevation C partial floorplans apply to Elevation B full floor plan dimensions. E. & O.E. 08/24 33-03

