

HEARTWOOD

BY CACHET

THE MAUVE

ELEV. A, B & C | 3051 SQ FT

OPT. REC. ROOM | 669 SQ FT

36'

COLLECTION



Artist's Concept

ELEVATION B



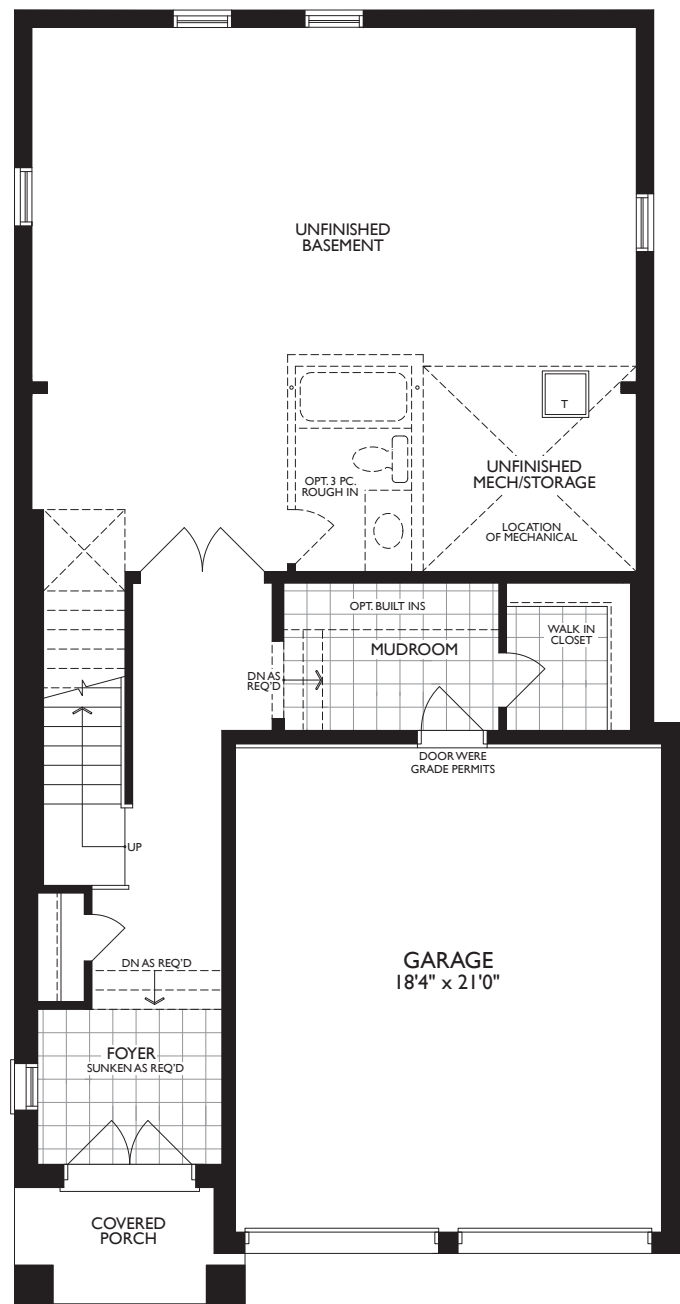
Artist's Concept

ELEVATION A

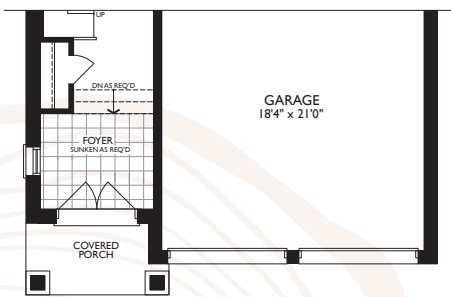


Artist's Concept

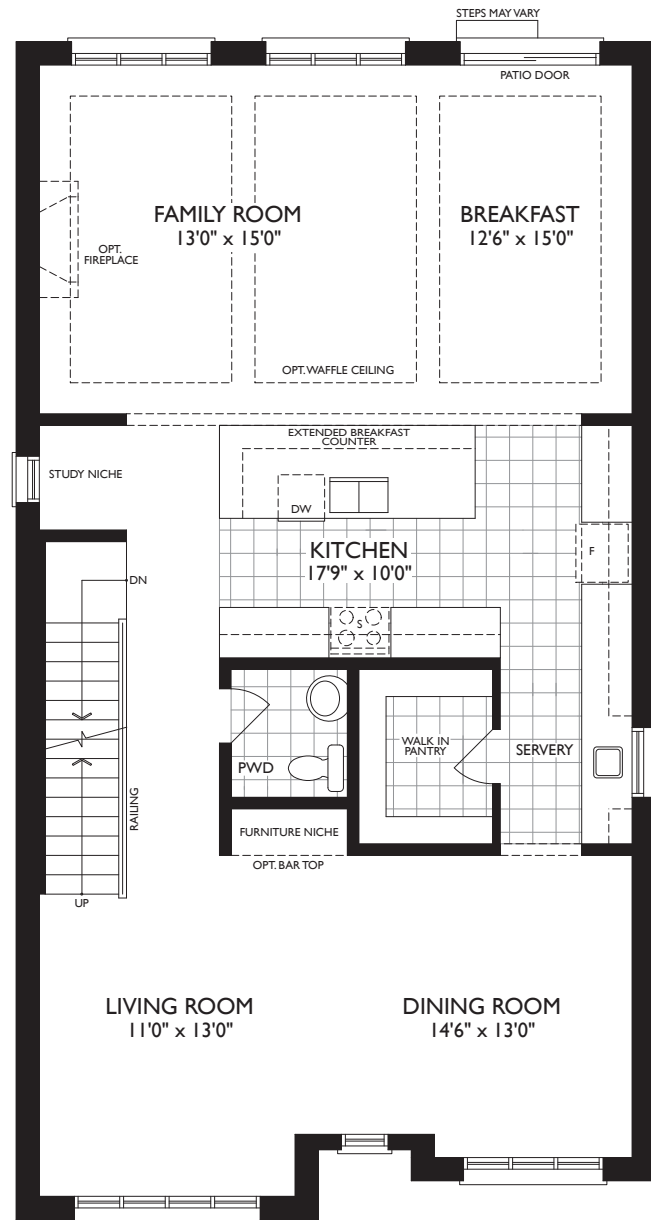
ELEVATION C



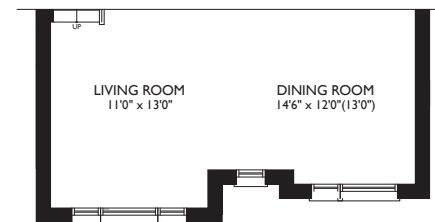
GROUND LEVEL - ELEV. A & B



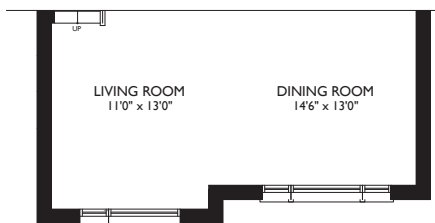
PART. GROUND LEVEL - ELEV. C



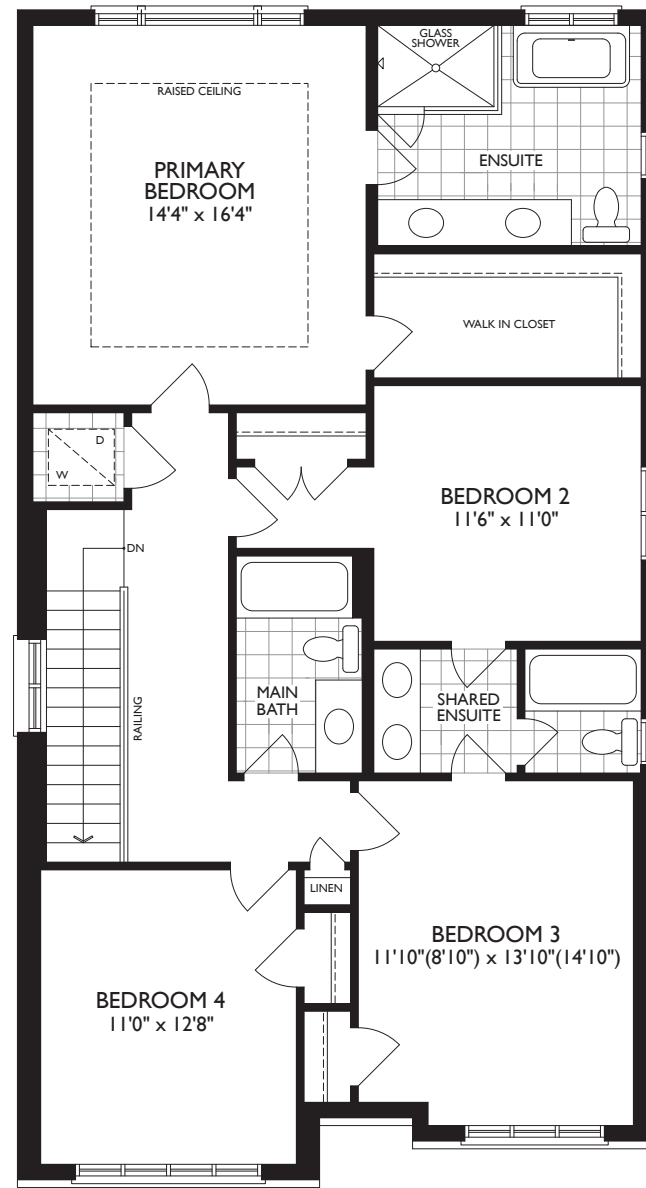
MAIN LEVEL - ELEV. A



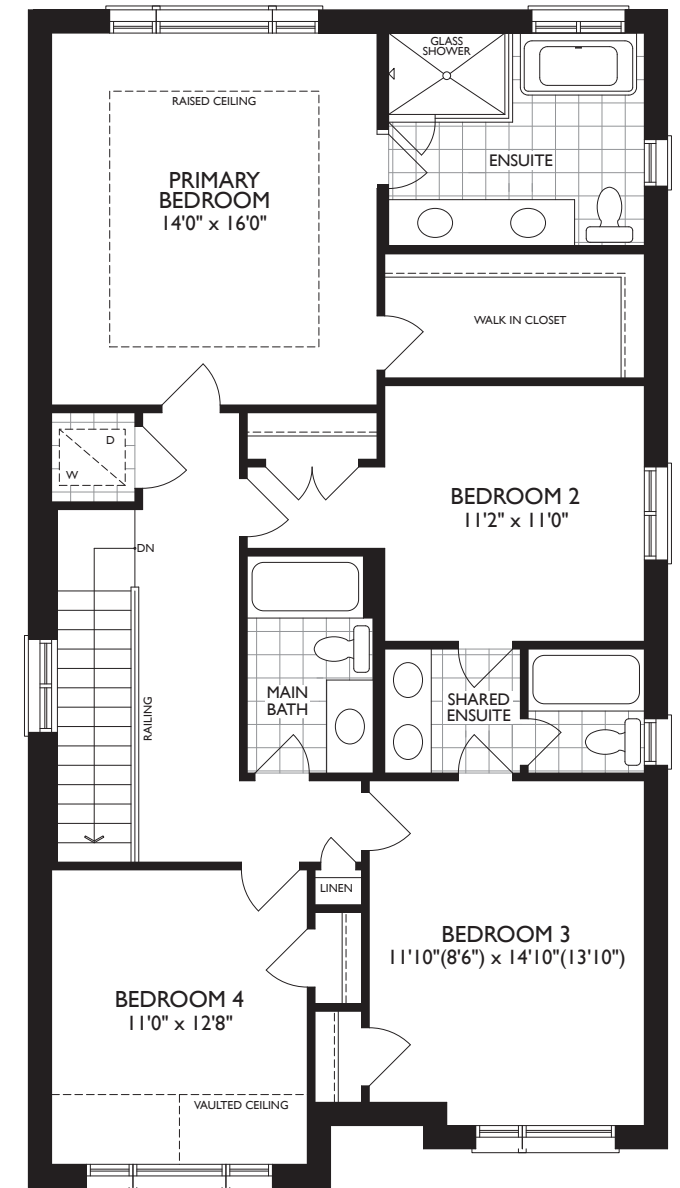
PART. MAIN LEVEL - ELEV. B



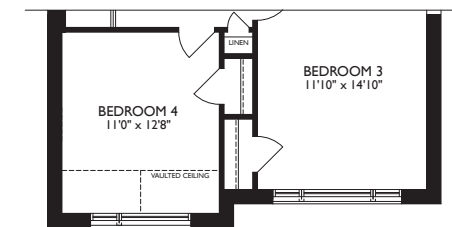
PART. MAIN LEVEL - ELEV. C



UPPER LEVEL - ELEV. A



UPPER LEVEL - ELEV. B



PART. UPPER LEVEL - ELEV. C

36'
COLLECTION

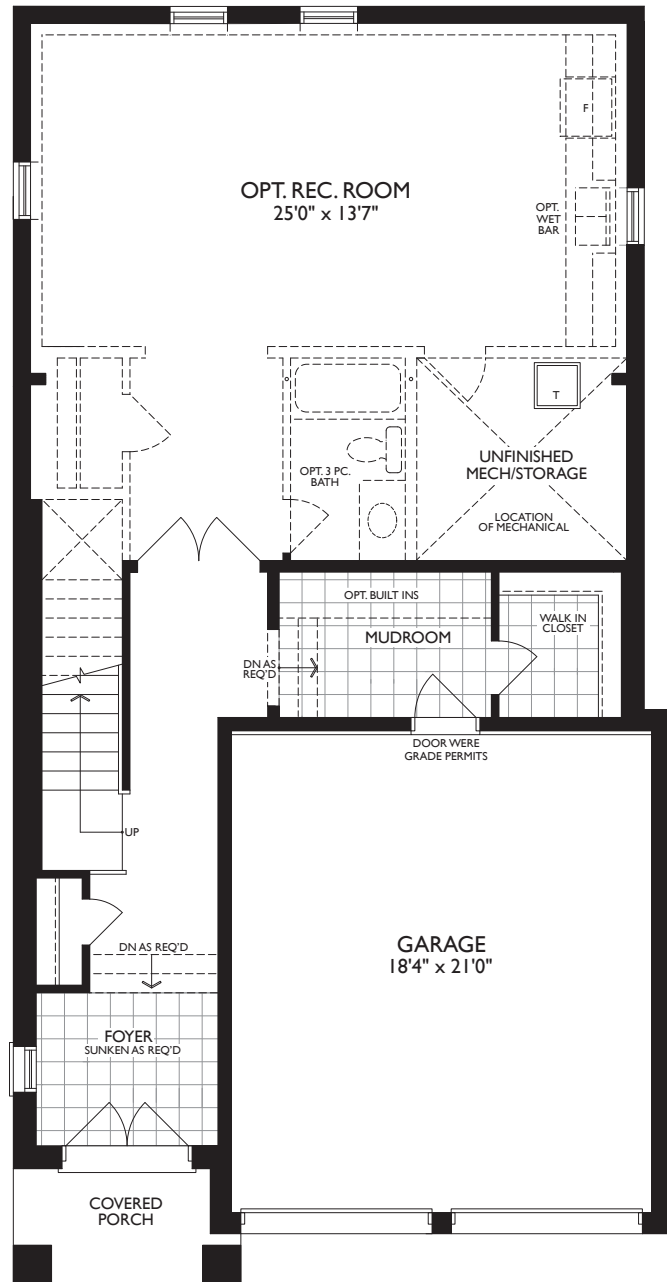
THE MAUVE

ELEV. A, B & C | 3051 SQ FT • OPT. REC ROOM | 669 SQ FT

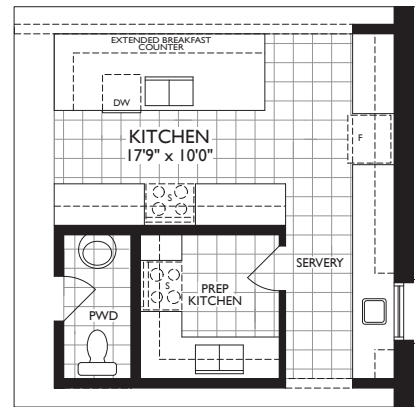
Dimensions, specifications, layouts and materials are approximate only, may vary, and are subject to change as provided in the Agreement of Purchase & Sale. All representative square footage include applicable finished lower level and open to below and above areas. Square footage varies according to architectural style. Plans may be reversed. Illustrations are artist's concept. Elevation C partial floorplans apply to Elevation B full floor plan dimensions. E. & O.E. March 2024. 3608



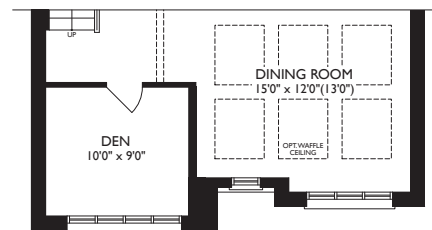
OPTIONAL FLOORPLANS



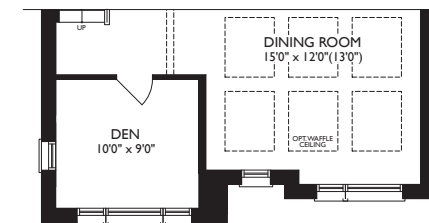
OPT. GROUND LEVEL REC ROOM
ELEV. A



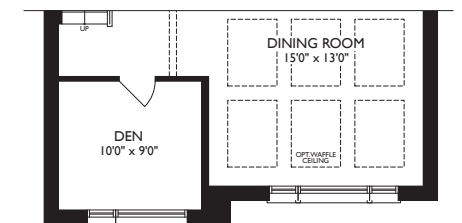
PART. OPT. MAIN LEVEL
W/PREP KITCHEN - ELEV. A, B & C



PART. OPT. MAIN LEVEL
W/DEN - ELEV. A



PART. OPT. MAIN LEVEL
W/DEN - ELEV. B



PART. OPT. MAIN LEVEL
W/DEN - ELEV. C

36'
COLLECTION

THE MAUVE

ELEV. A, B & C | 3051 SQ FT • OPT. REC ROOM | 669 SQ FT

Dimensions, specifications, layouts and materials are approximate only, may vary, and are subject to change as provided in the Agreement of Purchase & Sale. All representative square footage include applicable finished lower level and open to below and above areas. Square footage varies according to architectural style. Plans may be reversed. Illustrations are artist's concept. Elevation C partial floorplans apply to Elevation B full floor plan dimensions. E. & O.E. March 2024. 3608

CACHET