

HEARTWOOD

BY CACHET

THE PLUM

ELEV. A, B & C | 2802 SQ FT

OPT. REC. ROOM | 462 SQ FT

36'

COLLECTION



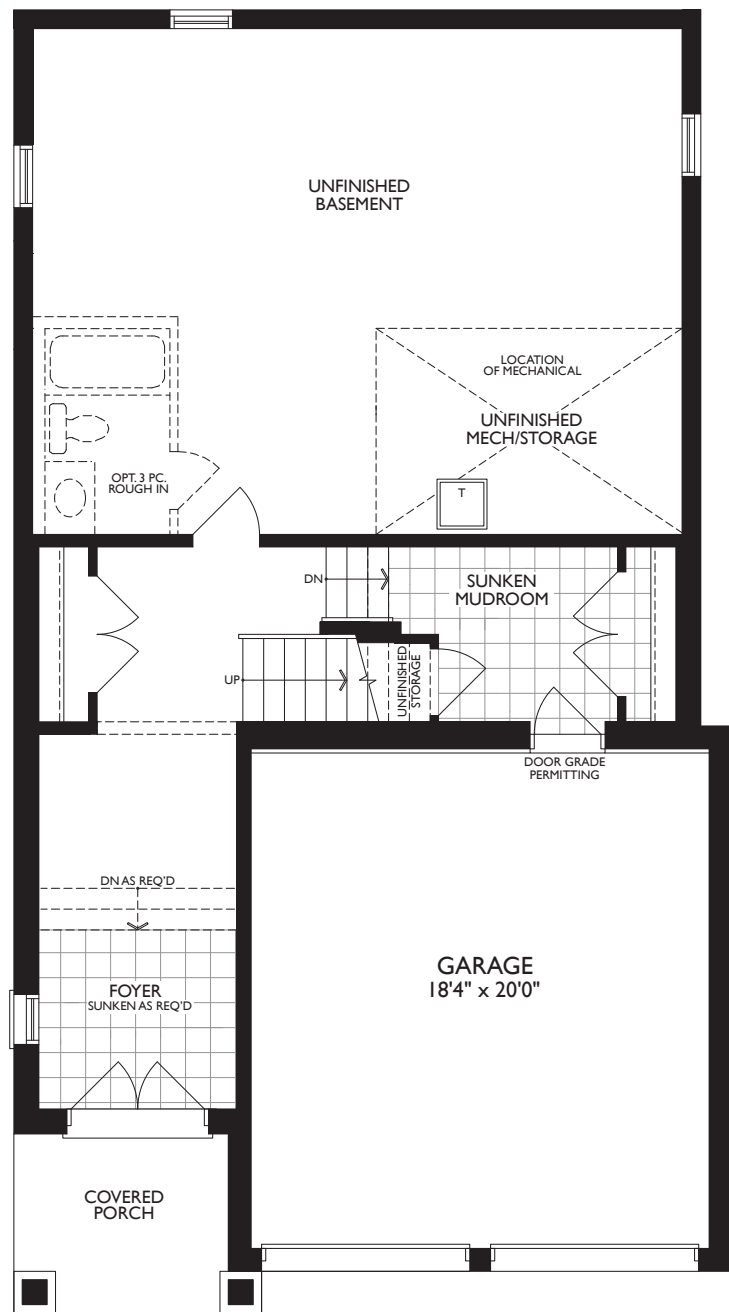
ELEVATION B



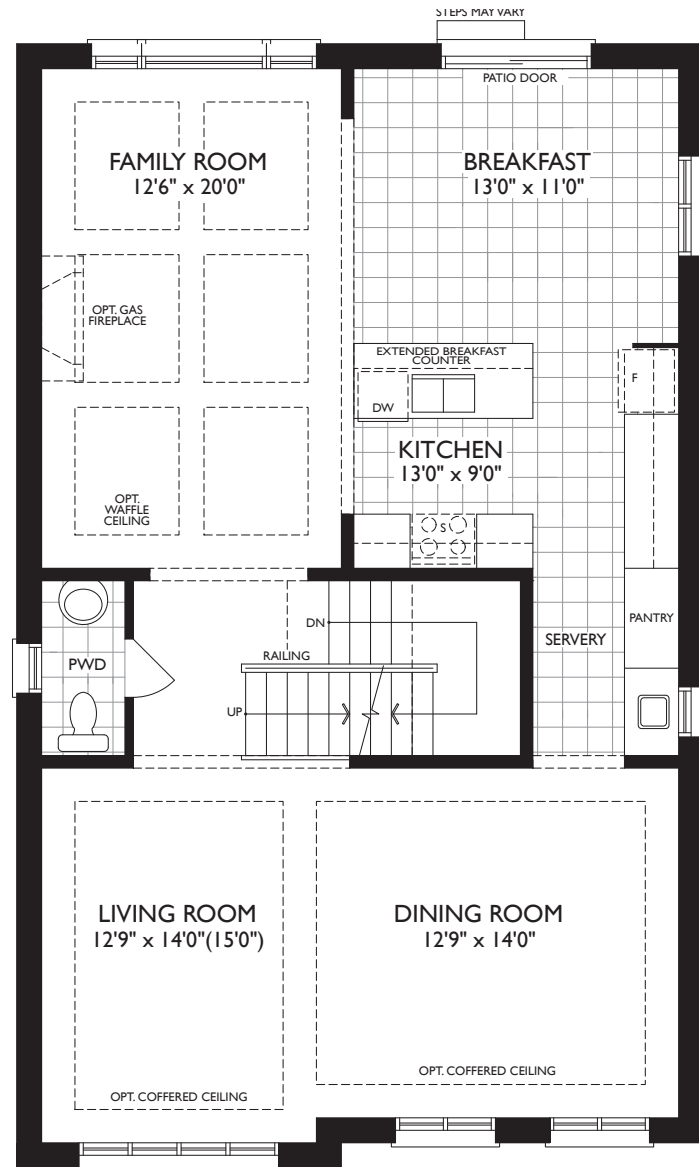
ELEVATION A



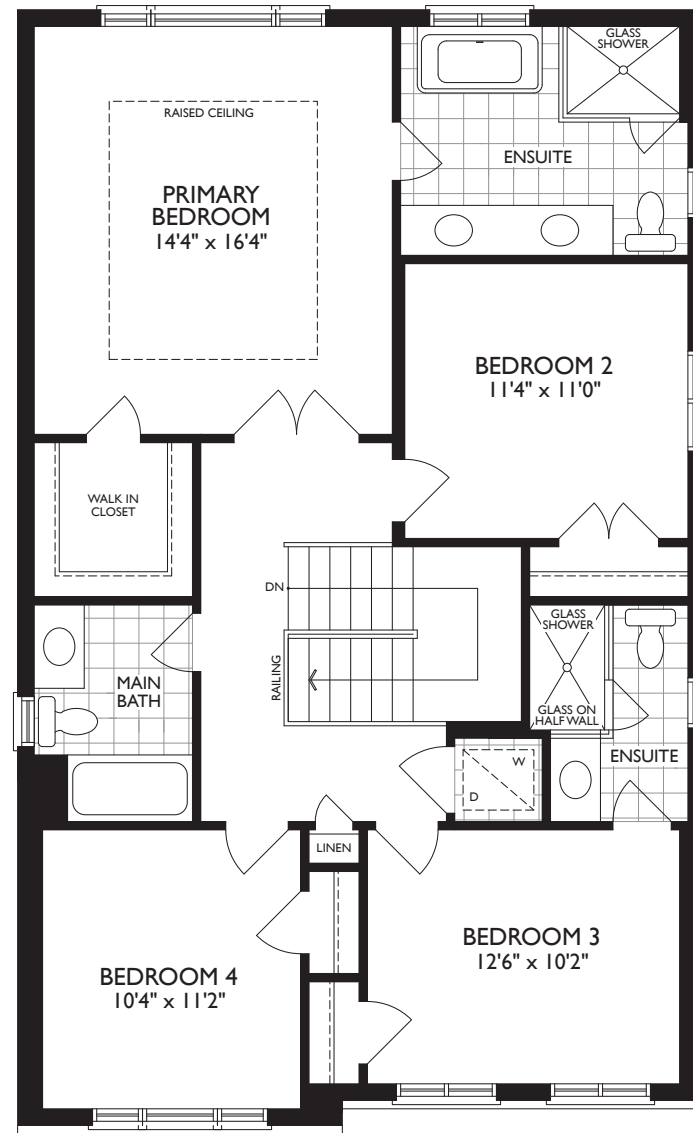
ELEVATION C



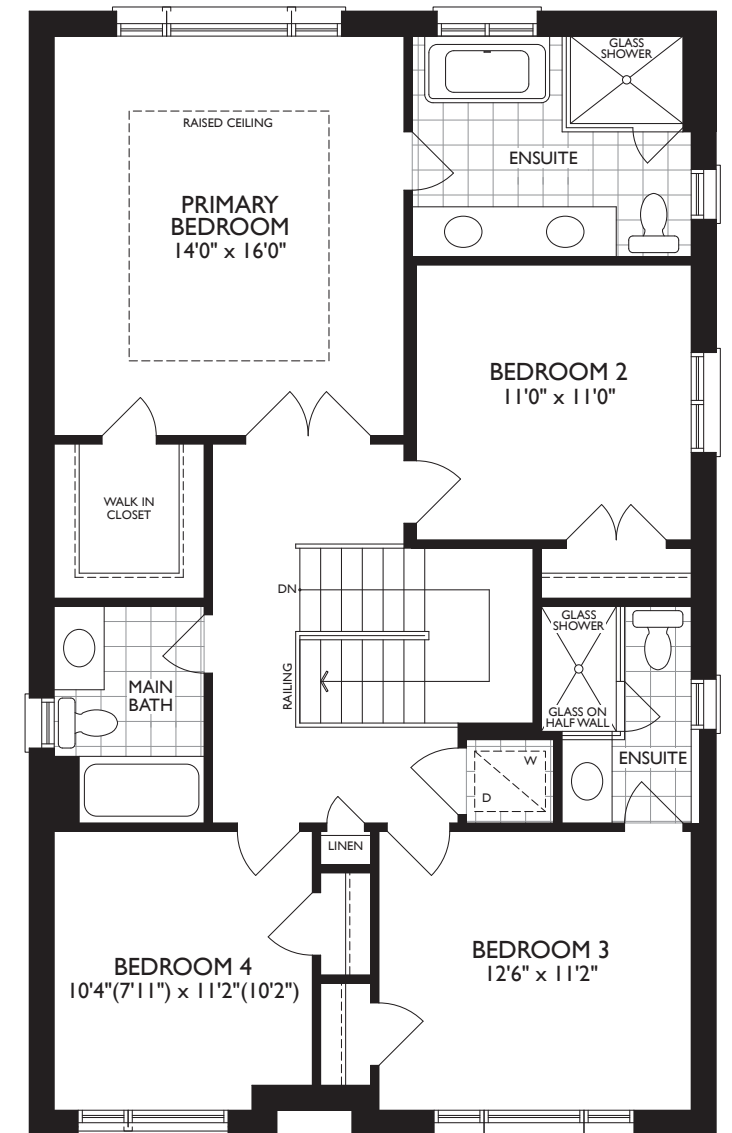
GROUND LEVEL - ELEV. A



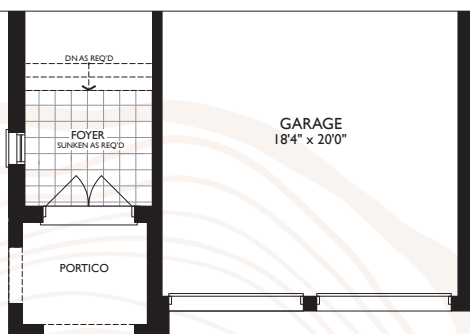
MAIN LEVEL - ELEV. A



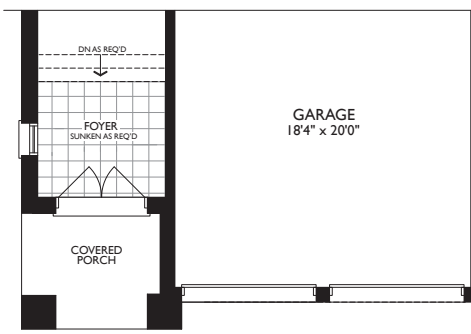
UPPER LEVEL - ELEV. A



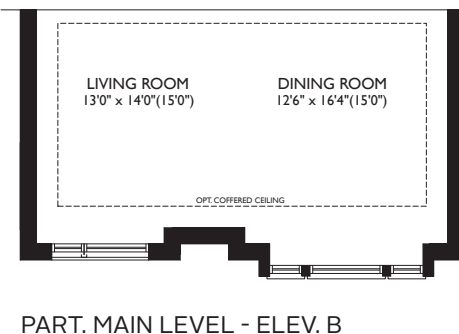
UPPER LEVEL - ELEV. B



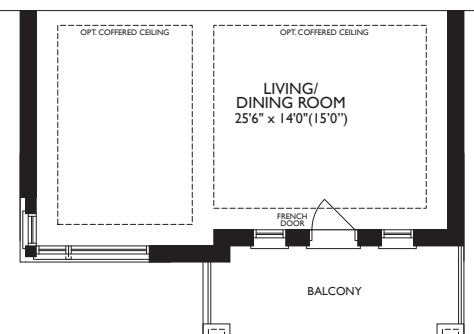
PART. GROUND LEVEL - ELEV. B



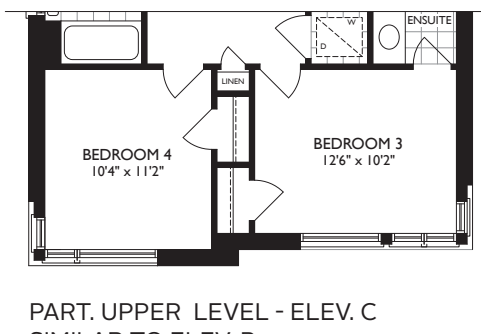
PART. GROUND LEVEL - ELEV. C



PART. MAIN LEVEL - ELEV. B



PART. MAIN LEVEL - ELEV. C



PART. UPPER LEVEL - ELEV. C
 SIMILAR TO ELEV. B

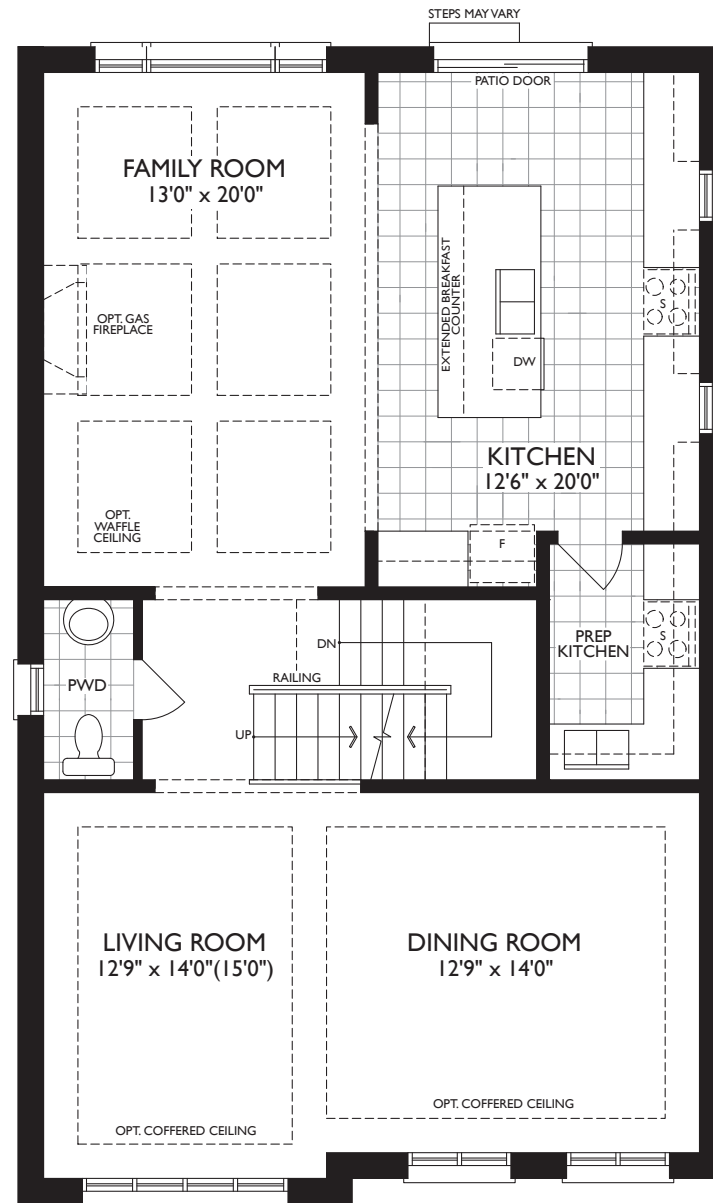
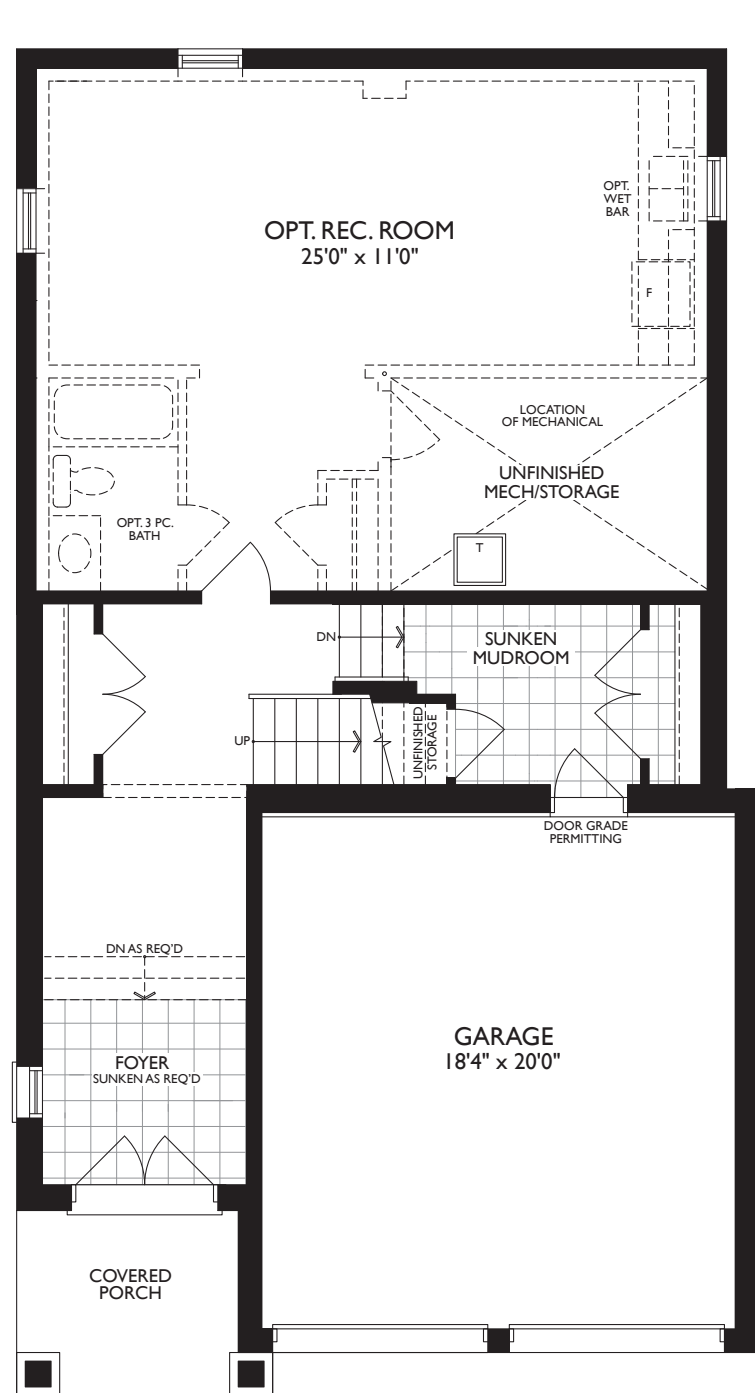
36' THE PLUM

ELEV. A, B & C | 2802 SQ FT • OPT. REC. ROOM | 462 SQ FT

Dimensions, specifications, layouts and materials are approximate only, may vary, and are subject to change as provided in the Agreement of Purchase & Sale. All representative square footage include applicable finished lower level and open to below and above areas. Square footage varies according to architectural style. Plans may be reversed. Illustrations are artist's concept. Elevation C partial floorplans apply to Elevation B full floor plan dimensions. E. & O.E. March 2024. 3607



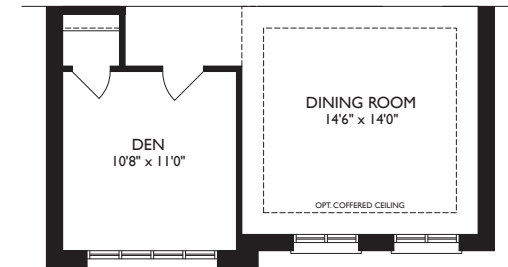
OPTIONAL FLOORPLANS



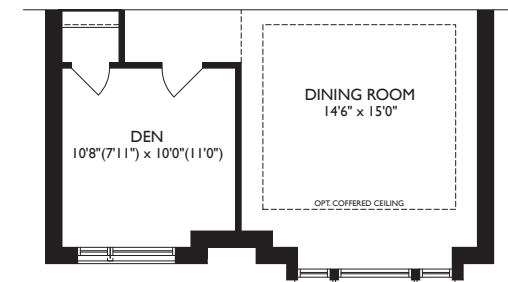
OPT. MAIN LEVEL W/PREP KITCHEN - ELEV. A



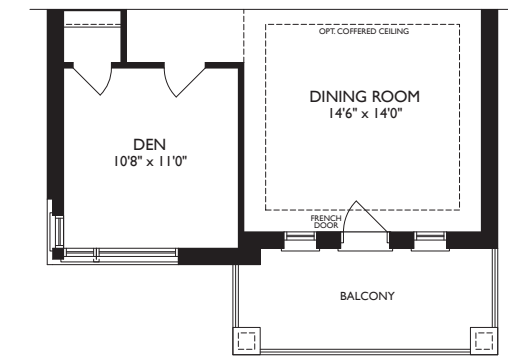
PART. OPT. MAIN LEVEL W/PREP KITCHEN - ELEV. B



PART. OPT. MAIN LEVEL W/DEN - ELEV. A - MAIN LEVEL SIMILAR



PART. OPT. MAIN LEVEL W/DEN - ELEV. B



PART. OPT. MAIN LEVEL W/DEN OPT. PREP. KITCHEN - ELEV. C MAIN LEVEL SIMILAR